

# NEW: JETSTONE CERAMICS

## GENERAL INFORMATION

Ceramic is a manufactured product most commonly found in tile or flagstone format, as a result of recent product development Jetstone are now able to offer ceramic slabs similar to those available in the natural stone and quartz markets. Jetstone supplies ceramic in both 5mm thickness and 7mm (3+3) thickness.

Ceramic is only available in a satin surface, highly polished finishes are not available in this material.

## PROPERTIES

- Heat resistance Good; 250°C
- Scratch resistance Excellent; 8 to the scale of MOHS
- Stain resistance Excellent; porosity 0.02%
- Roughness Fine grained

**Attention:** Whilst ceramic is extremely durable once in situ, extra care should be exercised during the transporting and unloading of this product to ensure that it is not subjected to any sudden or heavy impact. Ceramic is vulnerable to cracking and chipping when force is exerted by a sharp or heavy object. Due to the nature of the product any surface damage that results in the flaking or piercing of the finished surface can not be repaired. It is important that ceramic worktops are always carried vertically at all times, this includes during transportation.

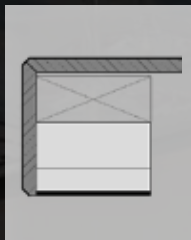
## TECHNICAL INFORMATION

- Tolerance 2mm for every piece
- Only available with flushmounted sinks (undermount and drainer grooves are not possible)
- Packing in hard carton is necessary
- No edgeprofile available on backsplashes (sides of backsplashes and upstand will therefore be unpolished and may show a small glue-joint)

## COLOUR DIFFERENCES

Ceramic is equal in colour and structure but because of the natural elements, small colour differences can not be totally excluded. The provided samples however can be used as a good indicator, although rights cannot be derived from those.

## EDGE PROFILES



### VFK3 VFK4 VFK6 VFK8 VFK10

5mm or 7mm thick material

mitred edge, standard available in 30mm, 40mm, 60mm, 80mm and 100mm thick

minimal chamfer

composite and foam on underside to make sure the worktop is supported by the kitchen cabinets

## JETSTONE CERAMICS

THE NEXT GENERATION IN WORKTOPS, TILES AND WALLCLADDING UP TO 3600 x 1200mm

For all your surface requirements - natural stone, quartz composite and ceramics, contact Jetstone UK:  
T 01442 249 733 | F 01442 500 570 | E [info@jetstone.co.uk](mailto:info@jetstone.co.uk) | I [www.jetstone.co.uk](http://www.jetstone.co.uk)

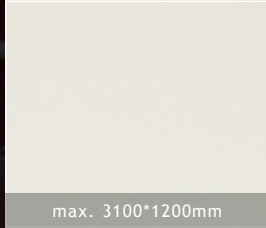
# JETSTONE CERAMICS COLOUR RANGE



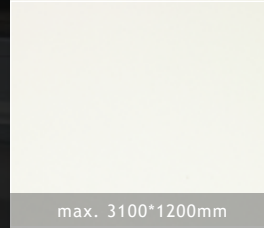
**Nero [satin]**



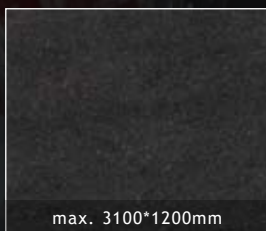
**Fumo [satin]**



**Perla [satin]**



**Nieve [satin]**



**Basalt Black [satin]**



**Blue Stone [satin]**



**Blend Nero [satin]**



**Oxide Nero [satin]**



**Castana Nero [satin]**



**Oxide Moro [satin]**



**Barro [satin]**



**Basalt Grey [satin]**



**Cement [satin]**



**Lava Grey [satin]**

Pictures shown will give a good impression of the material. However, no rights can be derived from this. Other colours are available on request.